

EN

# Profilitec company profile



## Leading company in the production of profiles and systems for ceramic tile laying.

Since 1966, our group has represented a significant and established presence in the industry.

In recent years, production has expanded and diversified, characterizing us more and more as a technical and quality company. We are present in more than 90 countries, guaranteeing technical and commercial support in 10 different languages.

Always on the cutting edge of designing new and exclusive solutions to laying problems, with many important patents and innovative solutions.

Profilitec represents a reference point emerging in the design industry, in residential and public construction. The product range is constantly expanding and is always up to date with real design needs, in terms of forms and materials, with technical and groundbreaking solutions.

Profilitec has had a significant growing trend through the years and continues to do so, thanks to the loyal customers that grew with us during these years.



# Who we are

The way Profilitec faces the market is on tiptoe, almost in a whisper, like its products, that do not aspire to be the main focus, but complete and enhance the principal product. Our presence in the market is **delicate** and **elegant**, we don't feel the need to impose ourselves and our products, but rather prefer to quietly and silently gain our unique and exclusive niche. The final "tec" in Profilitec stands for technic, and it's intentionally shaped to fit a +, that represents all the plus that you can get exclusively with Profilitec.

The green logo with the +, not in the middle but top left, to lead and distinct the whole logo, is off-center on purpose to further convey the idea of innovation and refinement.

The "positive profile" wants to underline once again our core business (profiles) but also the positive denotation of our corporate identity. To sum up: elegance, discretion, exclusivity and technicality: more value for anyone!





# The Company

There are many suppliers out there, but only a few are partners who stand right by your side. How are we your partner? By studying your needs and offering solutions and systems that resolve real problems. We make products for the installation of wall and floor coverings that are easy to use, durable, versatile and with undisputable quality, whilst guaranteeing fast delivery times, offering punctual and reliable assistance, collaborating with you to personalize products and solutions which other companies, be it because of size, lack of production organization or manufacturing capability, are not able to provide. All this because we know the job of the installer, the reseller, the architect and the contractor, each one with their own specific needs and priorities.

Millions of meters of profiles in the warehouse, ready for delivery, aiming to process all of your orders within 48 hours. This means that we're able to give you the right product, at the right time, at the right place (even at the job site), in the quantity and timing you prefer. It's a supply chain you can count on, with precise delivery worldwide: we serve more than 10,000 clients in 90 countries with 7,000 products.

1966

The first ones in Italy to produce a **complete system** for laying wall and floor coverings

2014

Profiles become built-in furniture elements: **Appendo** is born, combining **function** and **design**

2020

Release of **Showertec Linear**, the innovative linear drain for floor level showers

1999

The concept of profile modularity is redefined by the **Multiclip** and **Clip System**

2018

**Relocation** from the former Torri di Quartesolo headquarters, to the new headquarters in Isola Vicentina

2023

Innovation continues...

1966 - 2023

1992

**Profitalia** and **Folotec** are established, two companies that produce and distribute profiles all over the world

2008

**Profilitec S.p.A.** is established with the **incorporation** and merge of the two previous companies

2019

Release of **Uptec**, the pedestal system for raised floors

2016

**Profilitec Corp.** is established, with operational headquarters in Charleston, South Carolina, USA

2022

**Warehouse enlargement** for a total of 5500 square meters



6500 mq production area  
5500 mq warehouse area

8H average order processing time

1500 tons of CO2 saved with Uptec in 2022

15 big distributors in the US

10 years of work gained every year thanks to Leveltec

ROME  
DUBAI  
annual distance covered by the profiles produced

100 employees from  
25 different Countries

7000 products in the range  
10K clients in  
90 Countries

80 the equivalent in soccer fields of installation with Uptec last year

# Quality and environment

Profilitec has implemented and applies a quality and environmental management system in accordance with UNI EN ISO 9001:2015 and UNI EN ISO 14001:2015. It's an organizational model capable of continuously measuring and improving business and environmental performance.

The choice of attention to the environment has also led to EDP (Environmental Product Declaration) certification in accordance with ISO 14025 and EN 15804:2012+A2:2019, as a demonstration of commitment to increasingly reduce CO2 emissions to the environment from its products



# Our product range

Floor covering profiles



Stair nosing profiles



Wall covering profiles



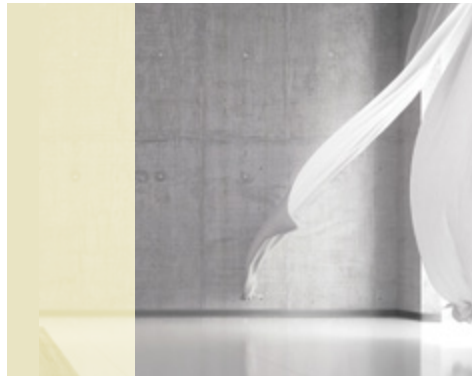
Joints



Perimeter profiles for terraces



Baseboard



DIY profiles



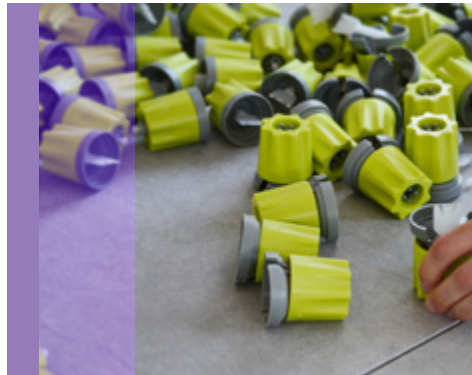
Membranes



Drainage systems



Tile installation accessories



Pedestals for raised floors







# Floor covering profiles

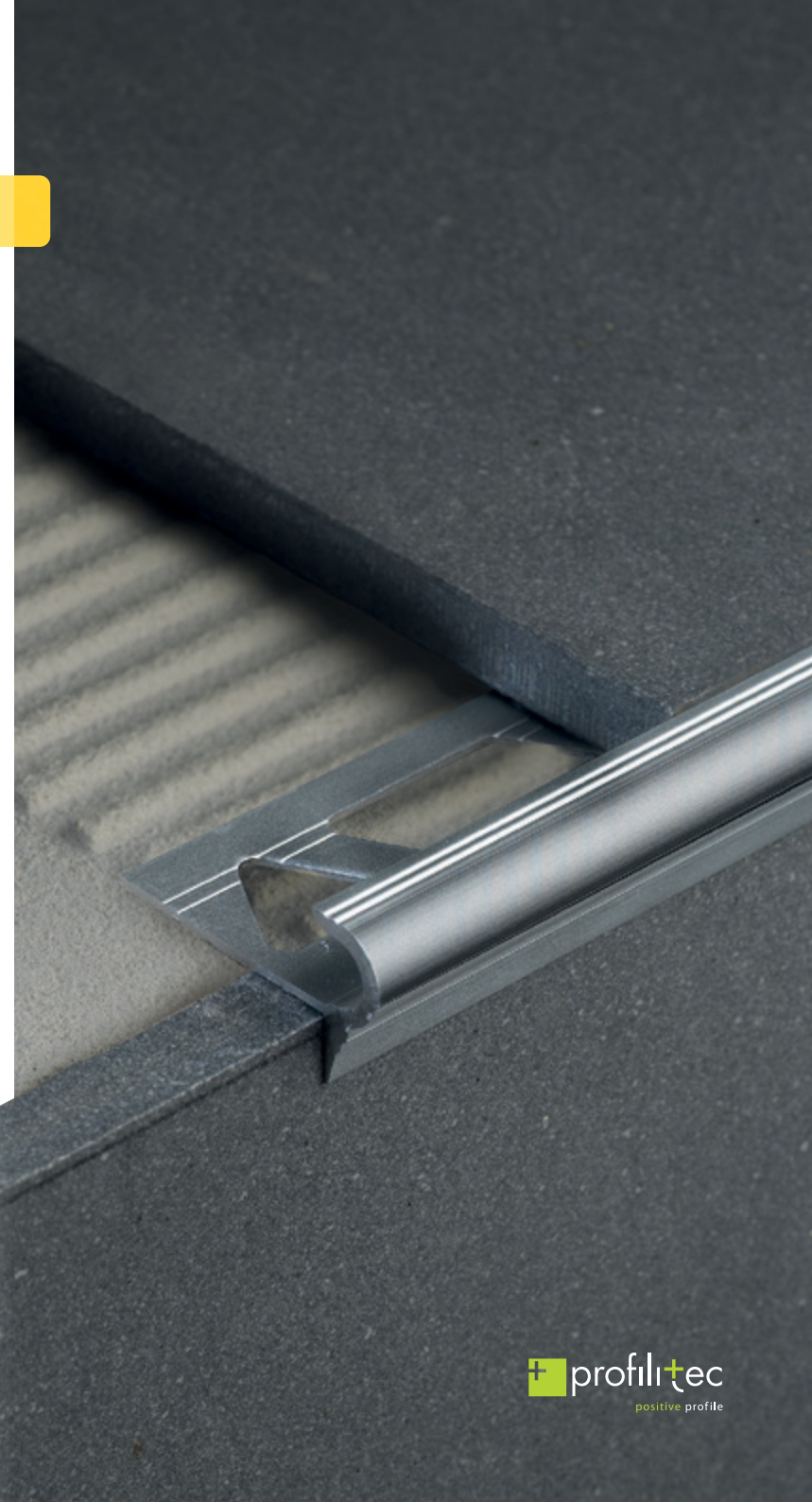
Products designed as a solution to various problems caused by the installation of flooring, such as unevenness between new and old coverings, connection between surfaces of the same height with the same or different materials, as joints, terminals, profiles or with simple aesthetic function. The profiles available feature numerous materials and finishes, so that they can be easily matched to any kind of flooring; from tiles, to wood, to vinyl. The huge range of profiles allows to choose from products to be installed while laying of the floor, to others designed for installation with the floor already laid. The versatility and wide assortment of materials and finishes make our profiles the best choice to finish any kind of flooring, whatever material they are made of and whatever way they are styled.

# Stair nosing profiles

Safety and aesthetics are of utmost importance when designing staircases and the right profile can make all the difference.

PROFILITEC proposes a complete line of technical yet aesthetic nosing profiles suitable for all flooring applications. Designed with safety in mind, our range of nosing profiles can be used for renovations in private and public buildings. Non-slip thermoplastic rubber inserts and ribbed treads highlight the cutting-edge details that distinguish PROFILITEC profiles.

These profiles will also reinforce the edge of the stairs at their most vulnerable areas which are exposed high mechanical stresses and traffic making them more durable.



# Wall covering profiles

Practical and decorative, economical and durable: PROFILITEC Wall Covering Profiles are a first-rate solution for detailing mosaic, natural stone and all wall tile installations.

Linear profiles are designed to provide edge protection for tile coverings. It provides vertical protection. It's versatility for floor or wall applications deletes the need for special tile edges or the need to cut 45 degree tile for edge terminations PROFILITEC proposes solutions with our Internal and External wall corners, providing ease of use and maintenance. Safe option to sharp mitre edges.

Available in synthetic, non-toxic materials, brass, aluminum and stainless steel profiles in over 30 trim finishes allow the designer to coordinate or contrast tile and grout colors. The end result is a completely integrated design environment.



# Joints

A building's structural frame is subject to differential movement due to the contraction and expansion of construction materials and its foundation. Movement joints are vital in accommodating the building's expected settlement. Movement joint design allows the designer to control where the movement manifests within the tile layout, preventing tile cracking and tenting.

It is advisable, therefore, to provide an adequate grid of expansion joints during installation, choosing the kind of joint and its location considering the loads and stresses to which the coverings will be exposed and the different coefficients of thermo-hygrometric linear expansion of the screed and tiles and the possible interactions between different materials. Indeed, the partitioning of the surface and the screed underneath is crucial to ensure a professional installation in both the adhesive and traditional methods

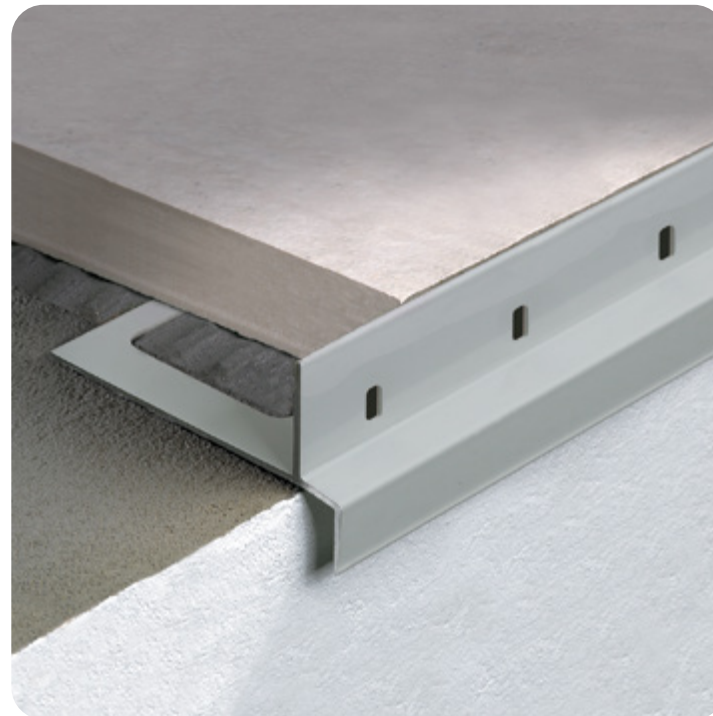


# Perimeter profiles for terraces

PROFILITEC offers a complete range of multipurpose perimeter profiles for balconies and terraces.

These elements are produced in stainless steel and powder-coated aluminum. They are available in seven different colors, and are a first-rate alternative to traditional natural stone thresholds and ceramic tile angle profiles.

This product line proposes contour, transition and trim profiles for finishing tile edges as well as innovative terrace and outdoor floating floor systems.





## Baseboard

PROFILITEC offers a wide range of technical baseboards and are first-rate alternatives to traditional wood, rubber or ceramic baseboards. Designed as aesthetic yet technical elements, the modern line of aluminum baseboards are durable and resistant to humidity.

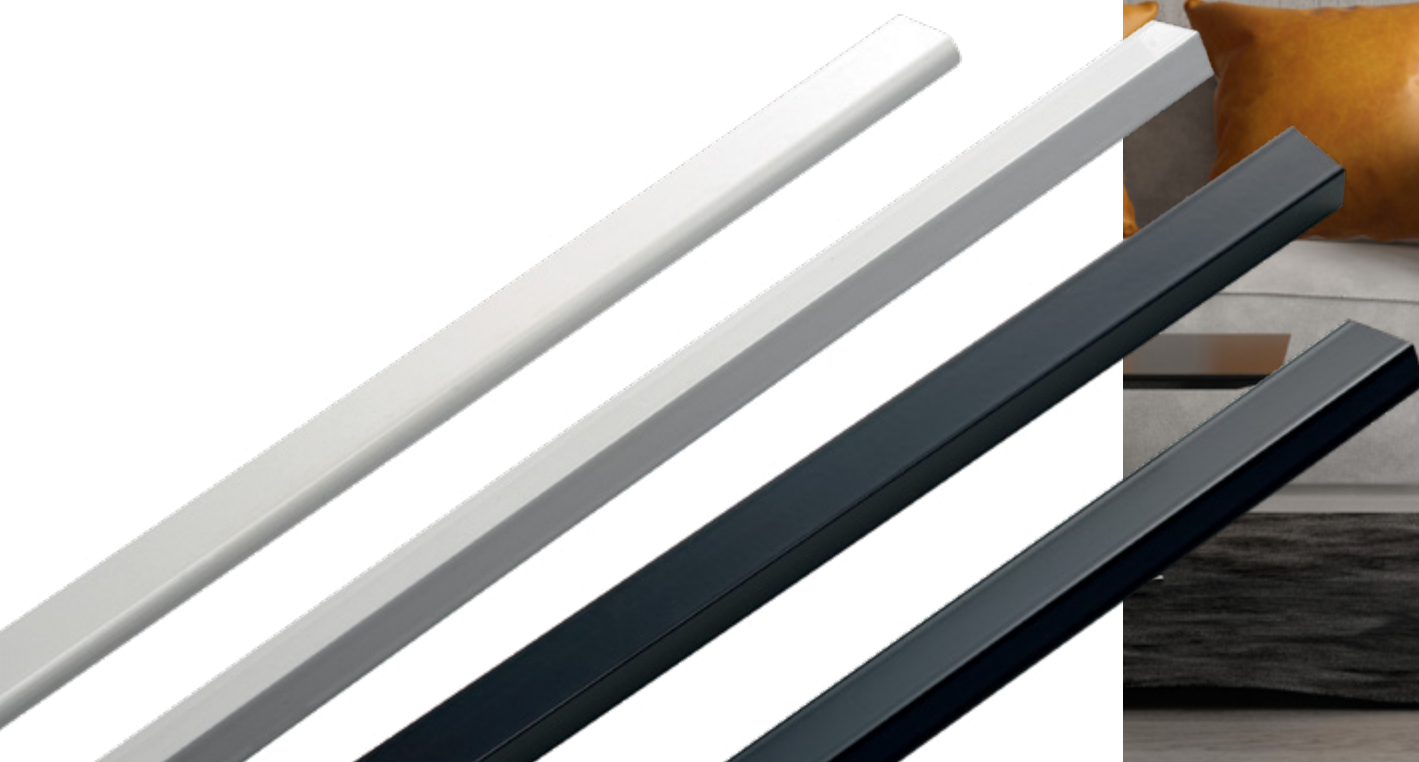
An internal cavity acts as a channel for low voltage cabling such as telephone, TV and computer wiring.

An innovative "two-tone" baseboard is available in a variety of chromatic variations and matches most material finishes. Coordinated "two-tone" wall protection rails. Particularly suited for public settings.

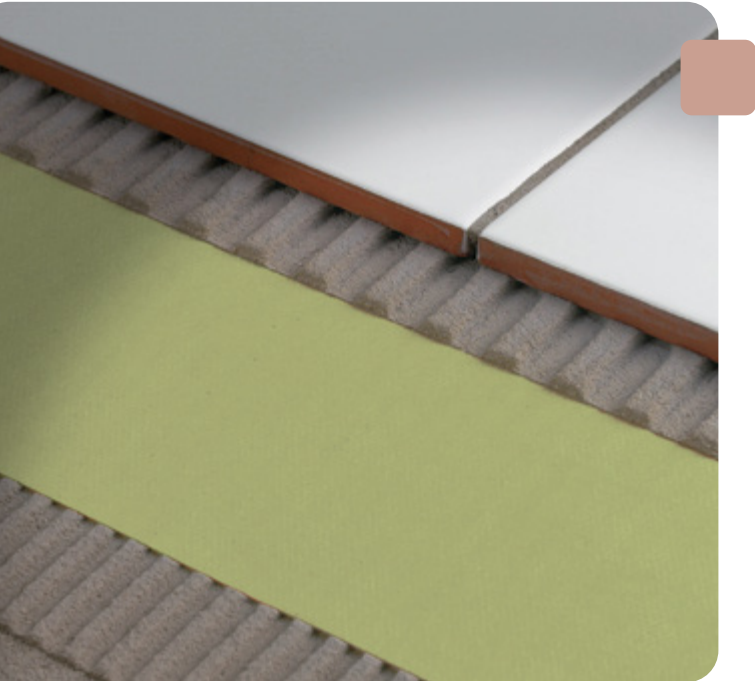
PLANO is the latest member of the baseboard family. Fully integrates into the wall surface, creating a seamless contemporary baseboard look.

# DIY profiles

To complete the vast selection of profiles, Profilitec also offers a series of do-it-yourself profiles. L, U, T, tube-shaped profiles and many other designs are available in numerous materials and finishes for all your design needs.



Foiltec



# Membranes

Waterproofing, drainage and uncoupling membranes are indispensable for successful tile and stone installations. PROFILITEC offers a variety of solutions: A membrane that uncouples the tile layer from the substrate, neutralizing any stress build-up that leads to cracking. Innovative drainage membranes for outdoor flooring over balconies and terraces to prevent the moisture saturation of mortar beds.

Membranes that meet ANSI 118.10 waterproofing standards, guaranteeing first-rate results in diverse construction applications.

Draintec



Floortec





# Our systems

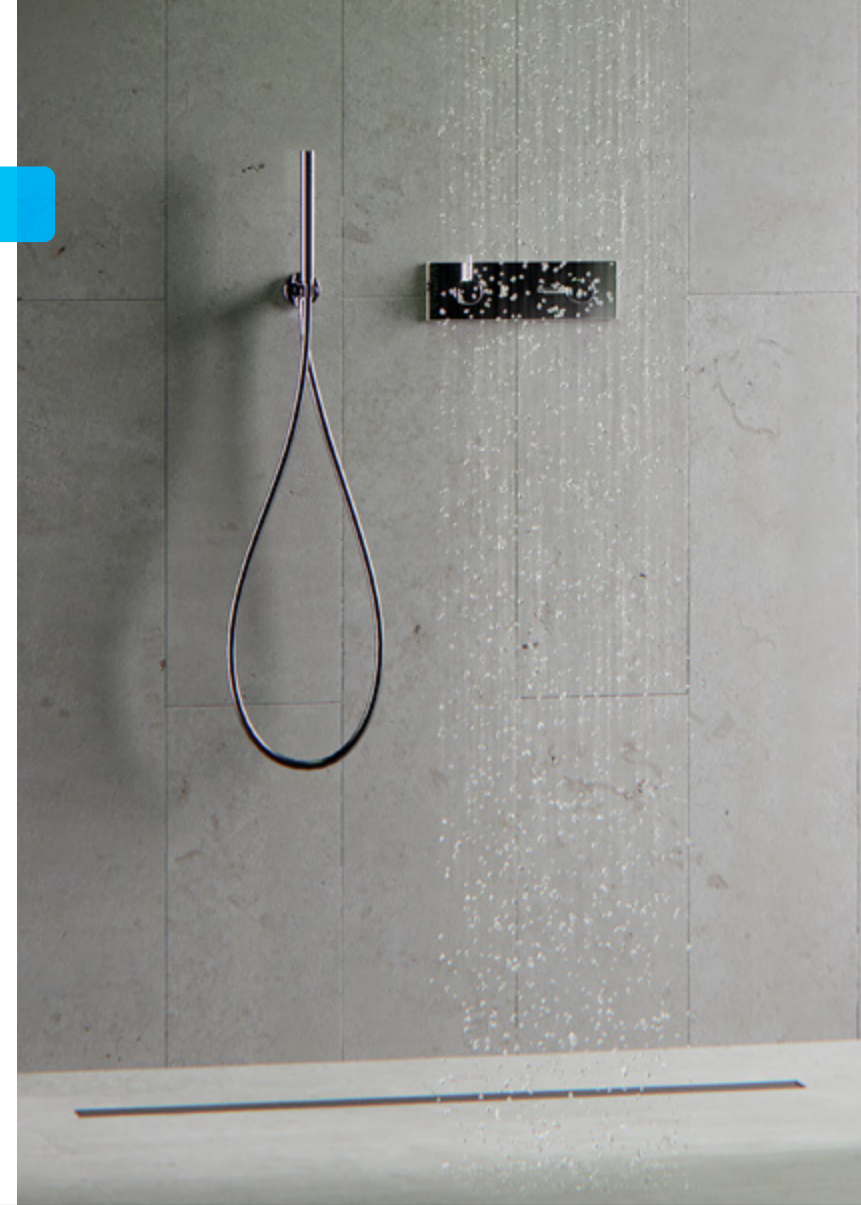
# Drainage systems

Indoor water management is an attractive topic on which technical and design choices increasingly focus their interests.

Showertec Linear is a range of shower drains for modern bathrooms that makes it possible to create barrier-free showers. It can be completed with functional sloped profiles and innovative technical solutions for building or remodeling a shower.

Square Drain is a simple and convenient water conveyance system on square drains.

Multidrain is a complete line of sloped modules that can solve the problem of water drainage in terraces or indoor environments created with large tiles and requiring a stylish yet functional solution.



# shower+tec<sup>®</sup> linear

Showertec Linear is a range of 100% made in Italy linear drains.  
They make it possible to create floor level and barrier-free showers.





## Linear drain with horizontal outlet

Standard version

Low version

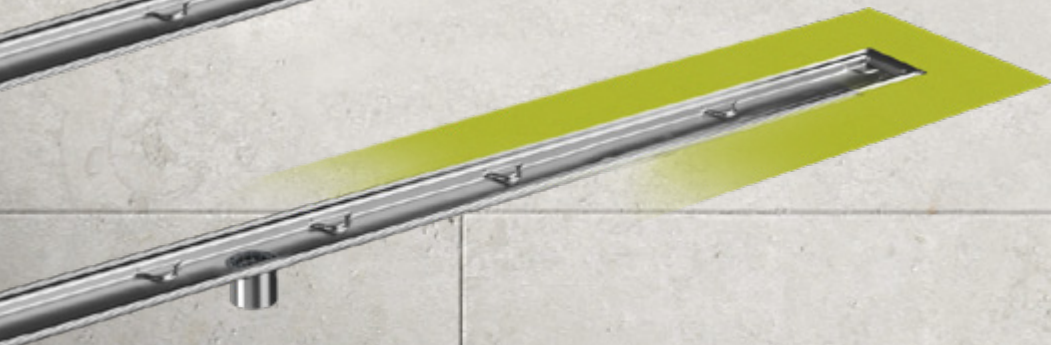
\* The syphon can rotate



## Linear drain with vertical drain

Center drain version

Off-center drain version



## Sizes available

600 - 700 - 800 - 900 - 1000 - 1200 mm

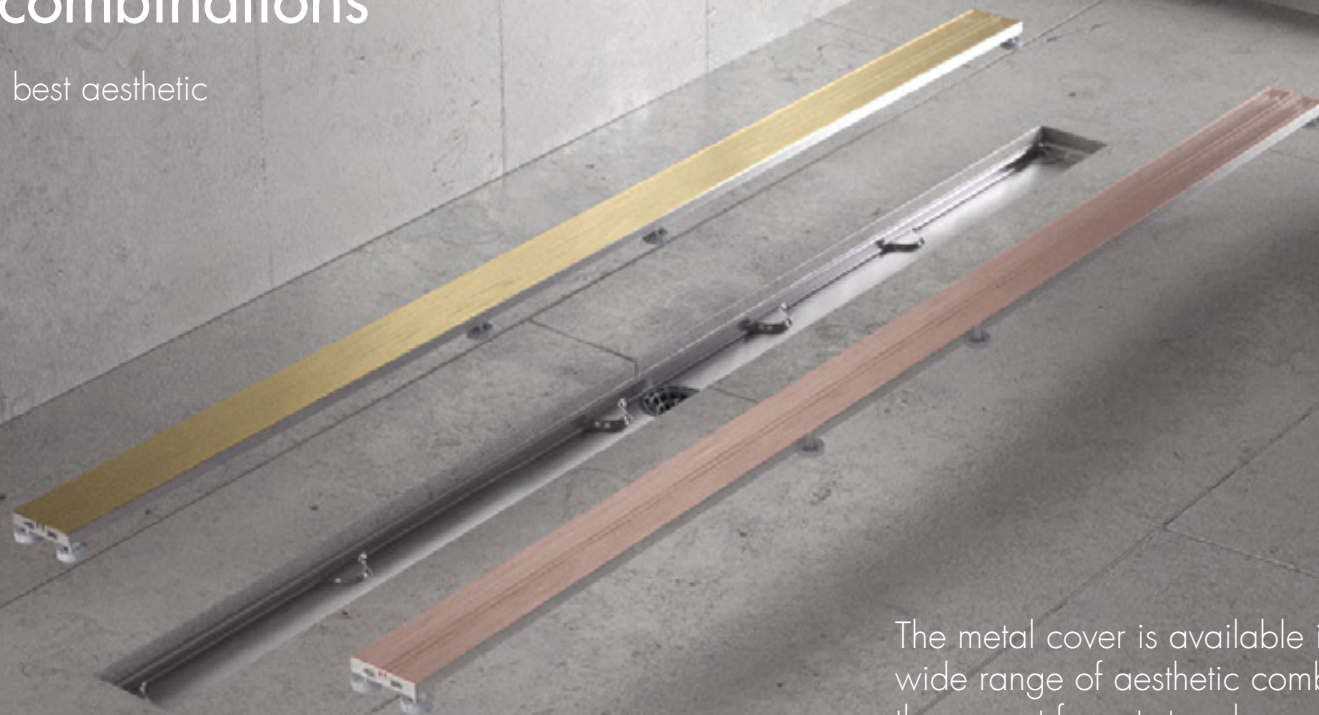
# 270 aesthetic combinations

3 kinds of grids to meet the best aesthetic requirements.

**Invisible**

**Tileable**

**Metal**



The metal cover is available in 16 finishes for a wide range of aesthetic combinations matching the current faucets trends.

# 270



Discover more

The cover can feature an external frame, to create armonious matches or interesting color contrasts.



# shower+tec<sup>®</sup>

shower+tec



# Showertec central

The industry's most advanced tile shower system.  
**Quick** and **easy** same day installation.

Place of well-being, peace and tranquillity.  
Bathrooms fulfill nowadays these and other functions  
and need practical and quick solutions without  
compromises in terms of design and quality.

This is why Profilitec came up with an innovative  
project that includes all the necessary elements to  
create or renovate a perfectly waterproofed shower  
without needing maintenance and a system that can  
be installed without the use of mortar.



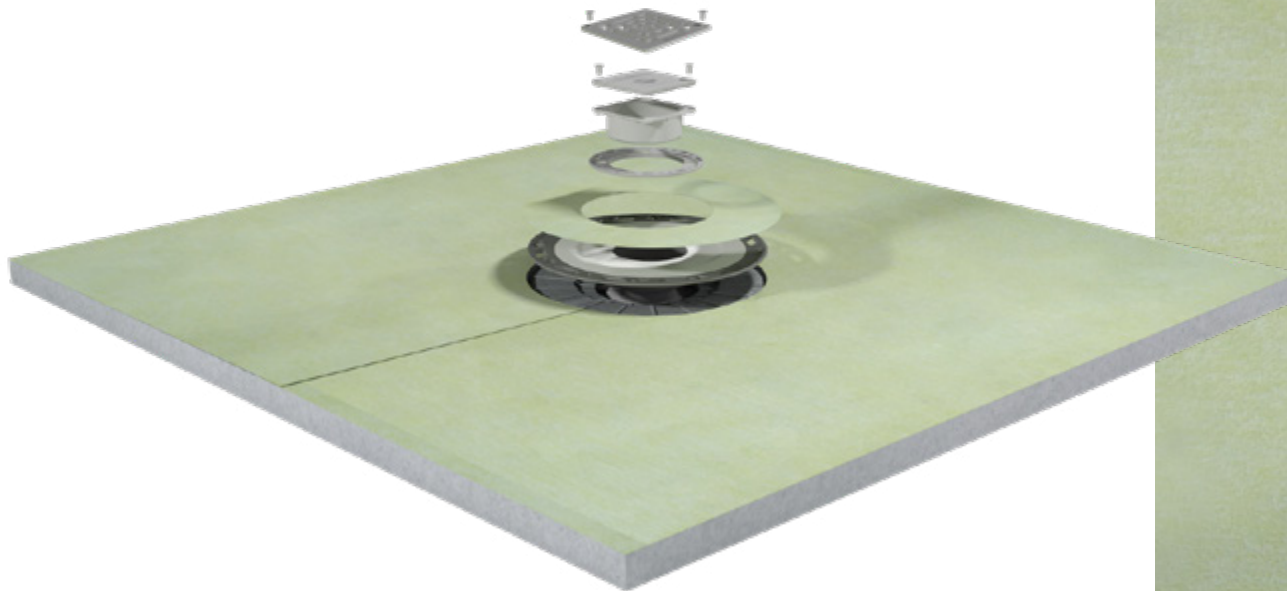
Waterproof and vapour tight trays and curbs with PRE-ATTACHED membrane

High compression EPS components

Curb height flexibility

Can also be used for mosaic tiles

Recycled EPS content



# Tile installation accessories

There are different situations where even a small detail can quickly and successfully solve an installation problem or simply speed up the work of applicators, avoiding time-consuming touch-ups or adjustments.

The widespread use of large scale format tiles in modern design interiors has opened the door for new and innovative solutions in tile installation.

To complete its vast line of profiles, Profiltec offers a range of tile laying installation accessories which meets both professional and do-it-yourself requirements.

Spacers, profiles for carpet runners and entrance mats, and custom-made profiles in a wide variety of materials satisfy all customer needs.

level+tec®



# Leveltec LEV

Leveltec is a revolutionary patented laying system: it's different from all the other systems on the market. It doesn't require tools for its installation and removal.



The products can be dry laid, without needing glue. The system consists of a reusable cap and a range of tie-bases (linear, "T" shaped and cross shaped) that allow the creation of 2,3,5 mm (according to UNI EN 11493) and 1 mm joints.

The cap can be used with all the tie-bases, that should be chosen according to the type of tile and laying pattern.





## Pedestals for raised floors

The installation of raised floors offers advantages that go beyond the simple aesthetic function. They are in fact ideal for hiding pipes and electrical systems, they favor the outflow of rainwater, offer resistance to loads out of the ordinary and the ease of inspection makes the system versatile and safe. The supports are ideal for creating raised outdoor floors such as balconies, gardens, swimming pool edges, verandas and public places.

Uptec is a revolutionary installation system for raised floors. With just 3 skuS, it is possible to create any height and the wide range of accessories available makes it versatile and suitable for laying simple ceramic floors, laying with a ceramic block or even for laying wooden planks on joists.

up+tec®





# Uptec

Uptes is an adjustable universal support for the realization of outdoor raised floors. It's highly recommended for layins 2cm thick ceramic tiles.

Uptec is a revolutionary 3 in 1 system, with just 3 skus. Beside the 3 products, Uptec comes with 3 accessories for standard installations (with 2 mm or 4 mm joints) and for wooden joists.

With Uptec, any desired height can be reached by simply adding SUPAR rings and the head can switch from self-leveling to fixed mode thanks to the innovative locking ring.

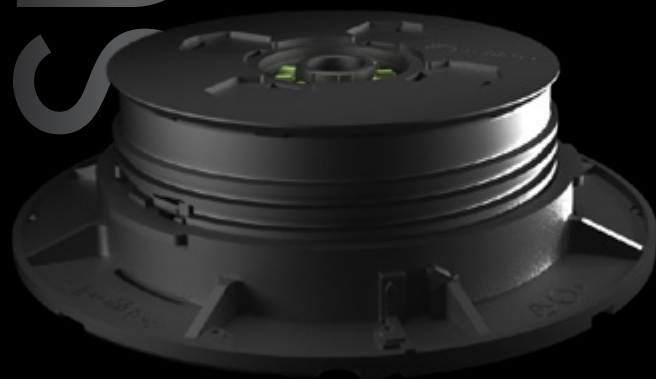


**SUPAL** is ideal for lower heights and is suitable for raised floors between a minimum of 28 mm and a maximum of 43 mm. **SUPAS** allows an additional elevation of 15 mm, but its most important feature is that it can be combined with the modular rings **SUPAR**, to reach any desired height.

SUPAL



SUPAS



SUPAR







# Uptec ground

Adjustable support

Uptec ground, also known as SUPT, is a **height adjustable support**, from 10 mm to 15mm. By adding the SUPB base, the height can reach up to 30 mm. Available with two different tab measure: SUPT, with 2 mm tabs, and SUPT4, with 4 mm tabs.





BSJ



BSR



BST20

# Bordertec BSJ, BSR, BST20

The Bordertec range was designed to **delimit the perimeter** of raised floors or to create a step.

Available in different colors and finishes, BSJ, BSR and BST20 protect the edges of the tiles and, in the meantime, they create continuity between horizontal and vertical coverings.

To complement the Bordertec range, joints and corners are available for the installation of a state-of-the-art raised floor.



We often see the product as the final result of the company, that is also made, however, of ideas, people and shared values. To partner with a company that puts its qualities and commitment on paper is a conscious choice.



**Profilitec S.p.A.**



Via Scotte, 3  
36033 Isola Vicentina  
(Vicenza) Italy



profilitec@profilitec.com



+39 0444 268311

**Profilitec Corp.**

472 Meeting Street  
Suite C - #301  
Charleston, SC 29403, USA

customerservice@profilitec.com

Toll free number: 855 290 9591

[www.profilitec.com](http://www.profilitec.com)

